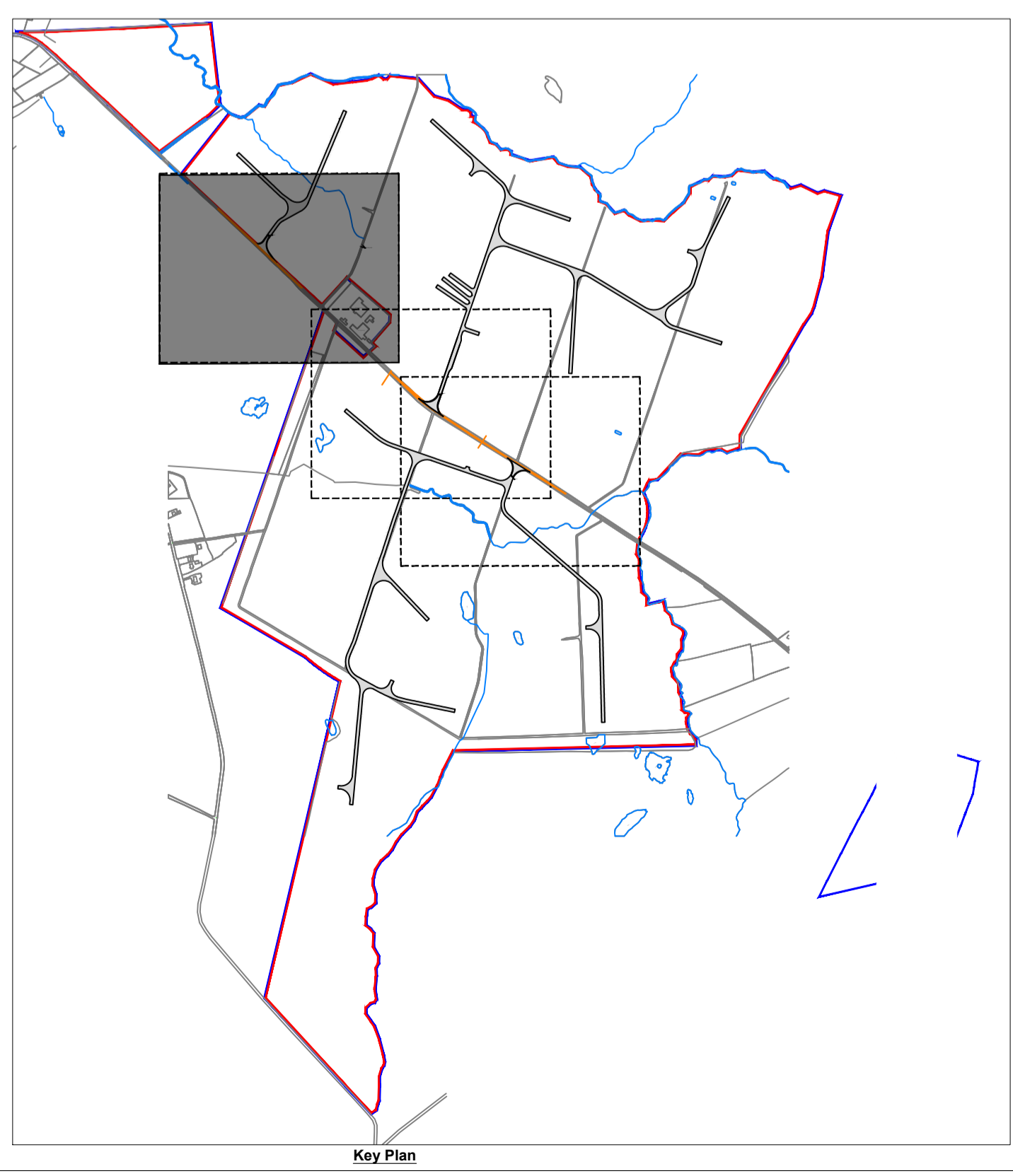
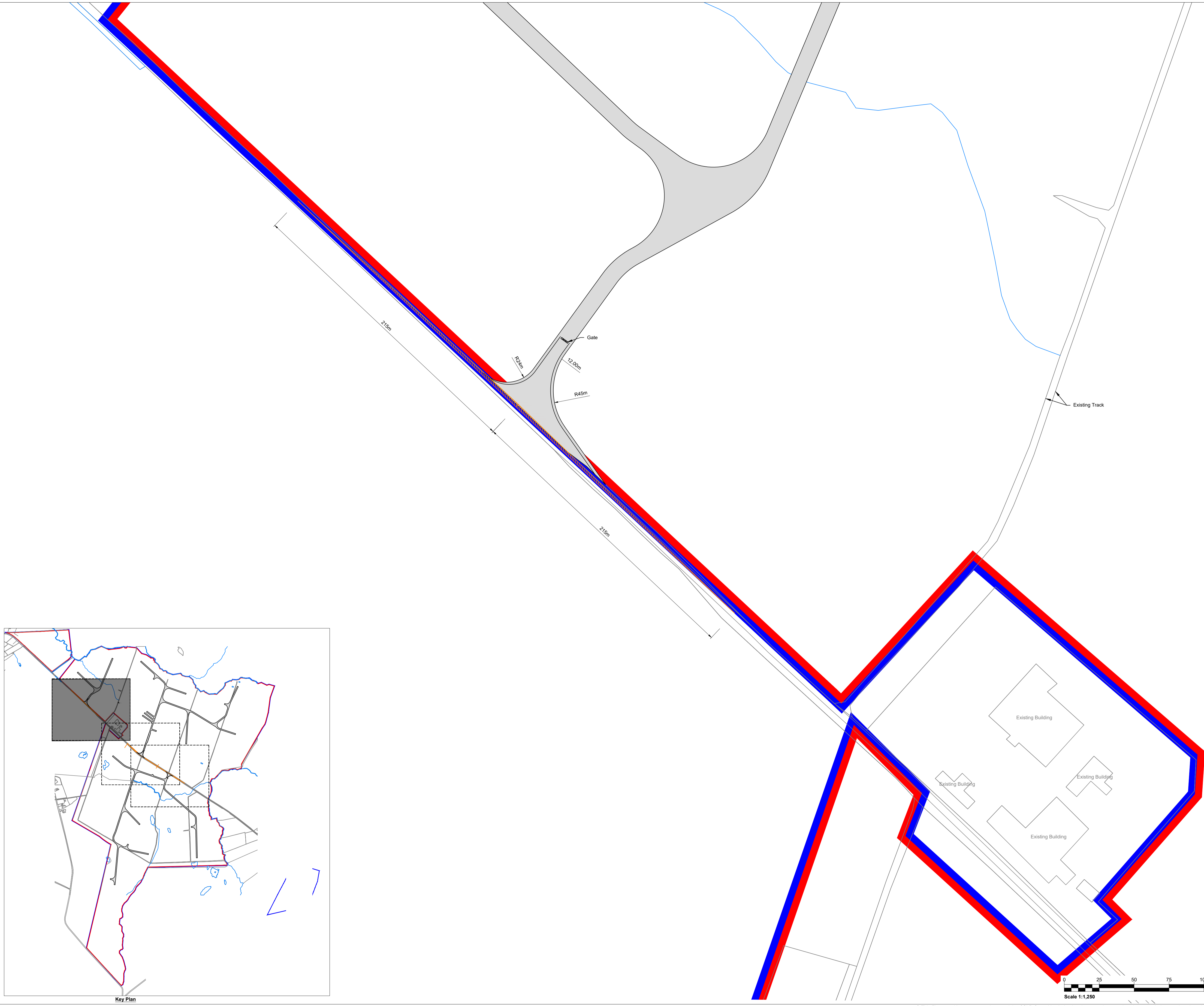


- Notes:**
1. This drawing is to be read in conjunction with relevant drawings, specification and reports.
 2. Dimensions are in metres, unless noted otherwise.
 3. Do not scale from this Drawing.
 4. Survey carried out by SLR Consulting Ltd between the 8th - 13th February 2025.
 5. Survey carried out using UAV with LIDAR.
 6. The proposed turbine layout should be used for planning purposes only.
 7. The final turbine hardstanding is subject to finalisation of a candidate turbine.
 8. Mapping extract from Ordnance Survey, Map Series 6 Inch Raster, Map Sheets MO018, MO025, MO026, MO027 and MO028
Map Series 1:2,500 Map Sheets 1238-C
Map Series 1:5,000 Map Sheets 1238, 1305 and 1310.
Co-ordinate system - Assigned IRENE95.Irish TM.

- Legend:**
- Planning Application Boundary
 - Area under Applicant control
 - Internal Access Track
 - Visibility Splay (2.4m x 215m)



P02	Clients comments	04/26	SJB	RA	GH
P01	Initial Issue	12/25	IG	RA	GH
Rev	Amendments	Date	By	Chk	Auth

SLR
www.slrconsulting.com

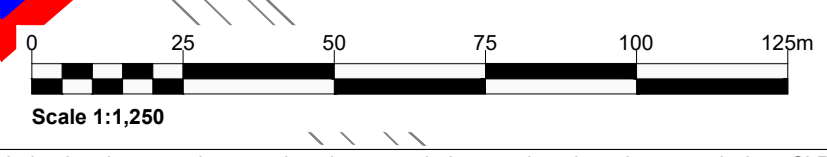
SLR Consulting Ireland
7 Dundrum Business Park,
Windy Kiscoe,
Dublin,
Ireland.
D14 N2V7

Client
RWE Renewables Ireland

Project
Muingmore Wind Farm

Figure Title
**Site Access Location
(Sheet 1 of 3)**

Scale 1:1,250 @ A1	SLR Project No. 501.065301.00001		
Designed IG	Drawn IG	Checked RA	Authorised GH
Date 12/25	Date 12/25	Date 04/26	Date 04/26
Figure Number D23-1	Rev P02		



\\slr-local\au\Office\IE\Dublin\SLR_DAV\SLR_Projects\06571_RWE_Renewables_Ireland\065301_Muingmore_Wind_Farm\0001_LD23-1_Site_Access_Location - 1.dwg 31/03/2026