

PROJECT

Muingmore
 Wind Farm

CLIENT



CONSULTANTS



NOTES: -

- This drawing is to be read in conjunction with relevant drawings, specifications and reports.
- Dimensions are in meters, unless noted otherwise.
- Battery layout has been displayed in line with OEM battery manufacturer requirements and is subject to detailed design.

LEGEND: -

ISSUE/REVISION

| I/R | DATE | DESCRIPTION |
|-----|----------|---------------------|
| P4 | 27.02.26 | Issued for Planning |
| P3 | 14.01.26 | Issued for Comment |
| P2 | 18.12.25 | Issued for Comment |
| P1 | 02.12.25 | Issued for Comment |
| P0 | 27.11.25 | Issued for Comment |

PROJECT NUMBER

300-101402

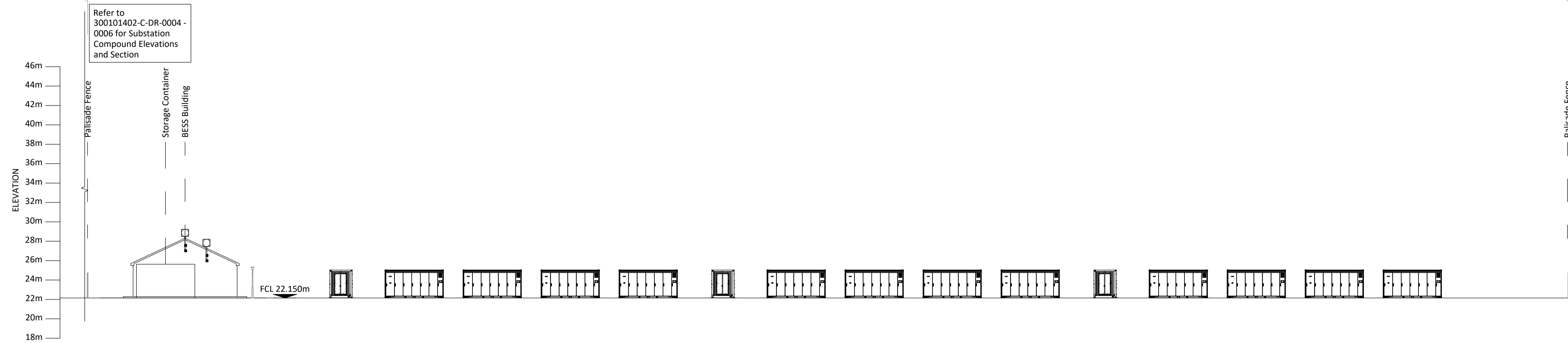
SHEET TITLE

BESS Compound
 Section B-B

SHEET NUMBER

300101402-C-DR-1006

Proposed BESS Compound 153m



Refer to
 300101402-C-DR-0004 -
 0006 for Substation
 Compound Elevations
 and Section

BESS Compound - Section B-B

Scale:1:250