

Blade Lifter Lowered Position

Tower



Pell Frischmann

93 GEORGE STREET, EDINBURGH EH2 3ES
 Telephone +44 (0)131 240 1270
 Email: pfeinburgh@pellfrischmann.com
 www.pellfrischmann.com

Client

RWE

Project
Muingmore Wind Farm

POI
59

SPA Location
N59 Dooleg More

Notes
 1. All mitigation is subject to confirmation through a test run.
 2. This is not a construction drawing and is intended for illustration purposes only.
 3. Do not scale from this drawing.

Drawing Title
N163 Blade Lifter and Tower

Rev	Description	Drn	App	Date
-	-	-	-	-

Drawn **TJL** Approved **TL** Date **13/01/2026**

Status	Draft	Key	
Revision	00	— Wheel SPA	Overrun
Scale	1:1000 @ A3	— Body SPA	Oversail
		— Load SPA	DoT
		— Indicative	

Drawing No. **10110851 - PF - SPA - 23**

Mitigation



Two chevron signs to be removed.
Land search recommended to confirm the extent of adopted boundary available.

Two chevron signs and section of safety barrier to be removed.

One bollard to be removed.

One chevron sign, section of safety barrier and one road sign to be removed.

Pell Frischmann
 93 GEORGE STREET, EDINBURGH EH2 3ES
 Telephone +44 (0)131 240 1270
 Email: pfeinburgh@pellfrischmann.com
 www.pellfrischmann.com

Client: **RWE**

Project	Muingmore Wind Farm	Drawing Title	N163 Blade Lifter and Tower
POI	59	SPA Location	N59 Dooleg More
Notes	1. All mitigation is subject to confirmation through a test run. 2. This is not a construction drawing and is intended for illustration purposes only. 3. Do not scale from this drawing.		

Rev	-	Description	-	Drn	-	App	-	Date	-
Drawn	TJL	Approved	TL	Date	13/01/2026				
Status	Draft		Key		— Wheel SPA Overrun — Body SPA Oversail — Load SPA DoT — Indicative				
Revision	00								
Scale	1:1000 @ A3								
Drawing No.	10110851 - PF - SPA - 23A								

Blade Lifter Lowered Position

Tower



Pell Frischmann

93 GEORGE STREET, EDINBURGH EH2 3ES
 Telephone +44 (0)131 240 1270
 Email: pfeinburgh@pellfrischmann.com
 www.pellfrischmann.com

Client **RWE**

Project **Muingmore Wind Farm** Drawing Title **N163 Blade Lifter and Tower**

POI **60** SPA Location **N59 / R312 Junction**

Notes
 1. All mitigation is subject to confirmation through a test run.
 2. This is not a construction drawing and is intended for illustration purposes only.
 3. Do not scale from this drawing.

Rev	Description	Drn	App	Date
-	-	-	-	-

Drawn **TJL** Approved **TL** Date **13/01/2026**

Status	Draft	Key	
Revision	00	— Wheel SPA	Overrun
Scale	1:1500 @ A3	— Body SPA	Oversail
		— Load SPA	DoT
		— Indicative	

Drawing No. **10110851 - PF - SPA - 24**



Existing track to be resurfaced and a new culvert crossing to be constructed to accommodate proposed load movements.

One traffic sign to be removed. Land search recommended to confirm the extent of available boundary.

Vegetation to be cleared.

Vegetation to be cleared.

Pell Frischmann

93 GEORGE STREET, EDINBURGH EH2 3ES
Telephone +44 (0)131 240 1270
Email: pfedinburgh@pellfrischmann.com
www.pellfrischmann.com

Client **RWE**

Project	Muingmore Wind Farm	Drawing Title	N163 Blade Lifter and Tower
POI	60	SPA Location	N59 / R312 Junction

Notes
 1. All mitigation is subject to confirmation through a test run.
 2. This is not a construction drawing and is intended for illustration purposes only.
 3. Do not scale from this drawing.

Rev	-	Description	-	Drn	-	App	-	Date	-
Drawn	TJL	Approved	TL	Date	13/01/2026				
Status	Draft		Key		Wheel SPA — Overrun Body SPA — Oversail Load SPA — DoT Indicative —				
Revision	00		Drawing No. 10110851 - PF - SPA - 24A						
Scale	1:1500 @ A3								

Blade Lifter Raised Position

Tower



Pell Frischmann

93 GEORGE STREET, EDINBURGH EH2 3ES
 Telephone +44 (0)131 240 1270
 Email: pfeinburgh@pellfrischmann.com
 www.pellfrischmann.com

Client **RWE**

Project **Muingmore Wind Farm**

POI **62** SPA Location **N59 Ballymunnelly**

Notes
 1. All mitigation is subject to confirmation through a test run.
 2. This is not a construction drawing and is intended for illustration purposes only.
 3. Do not scale from this drawing.

Drawing Title **N163 Blade Lifter and Tower**

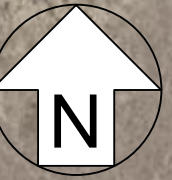
Rev	Description	Drn	App	Date
-	-	-	-	-

Drawn **TJL** Approved **TL** Date **13/01/2026**

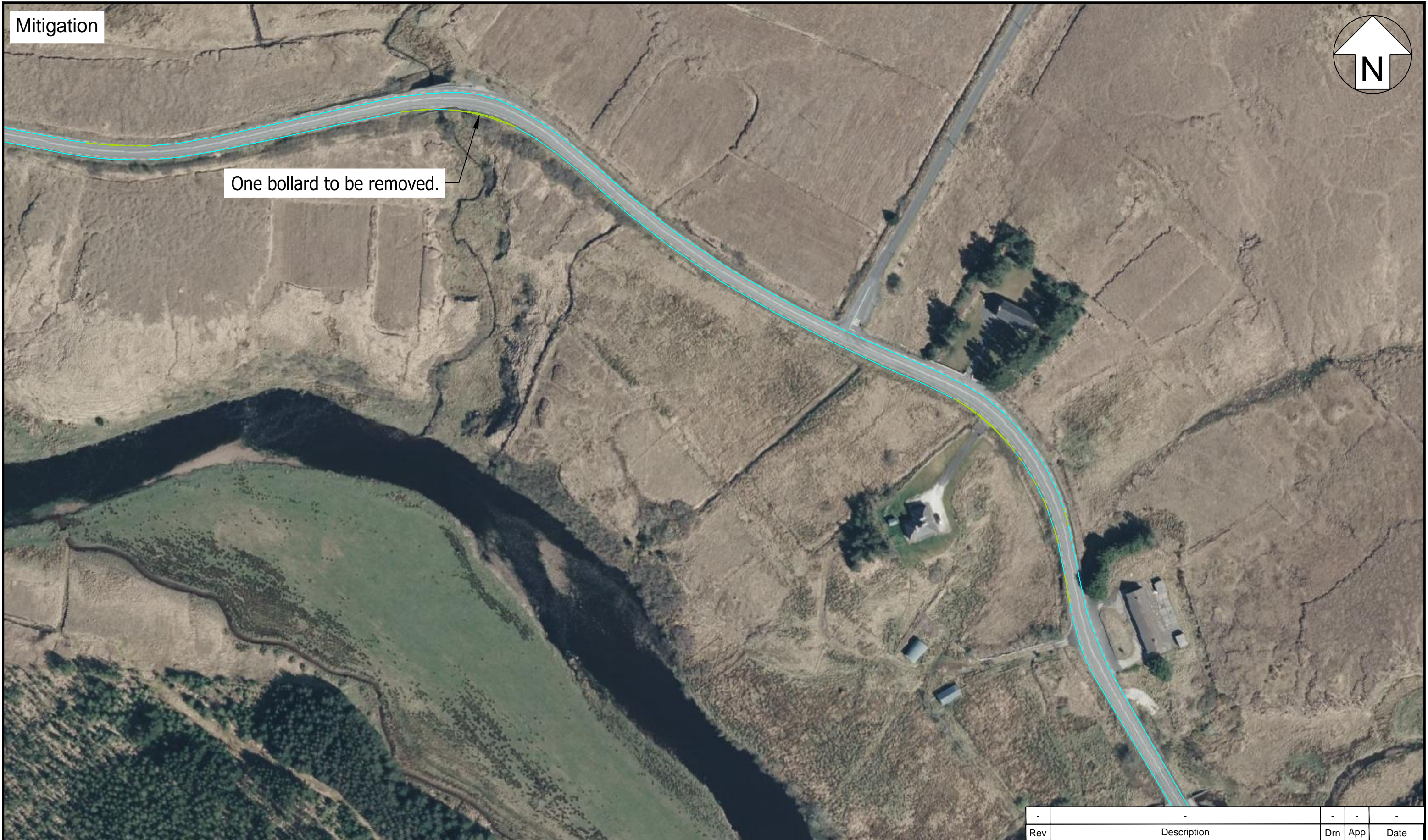
Status	Draft	Key
Revision	00	<ul style="list-style-type: none"> — Wheel SPA — Body SPA — Load SPA — Indicative Overrun Oversail DoT
Scale	1:1500 @ A3	

Drawing No. **10110851 - PF - SPA - 25**

Mitigation



One bollard to be removed.



Pell Frischmann

93 GEORGE STREET, EDINBURGH EH2 3ES
 Telephone +44 (0)131 240 1270
 Email: pfedinburgh@pellfrischmann.com
 www.pellfrischmann.com

Client

RWE

Project

Muingmore Wind Farm

Drawing Title

N163 Blade Lifter and Tower

POI

62

SPA Location

N59 Ballymunnelly

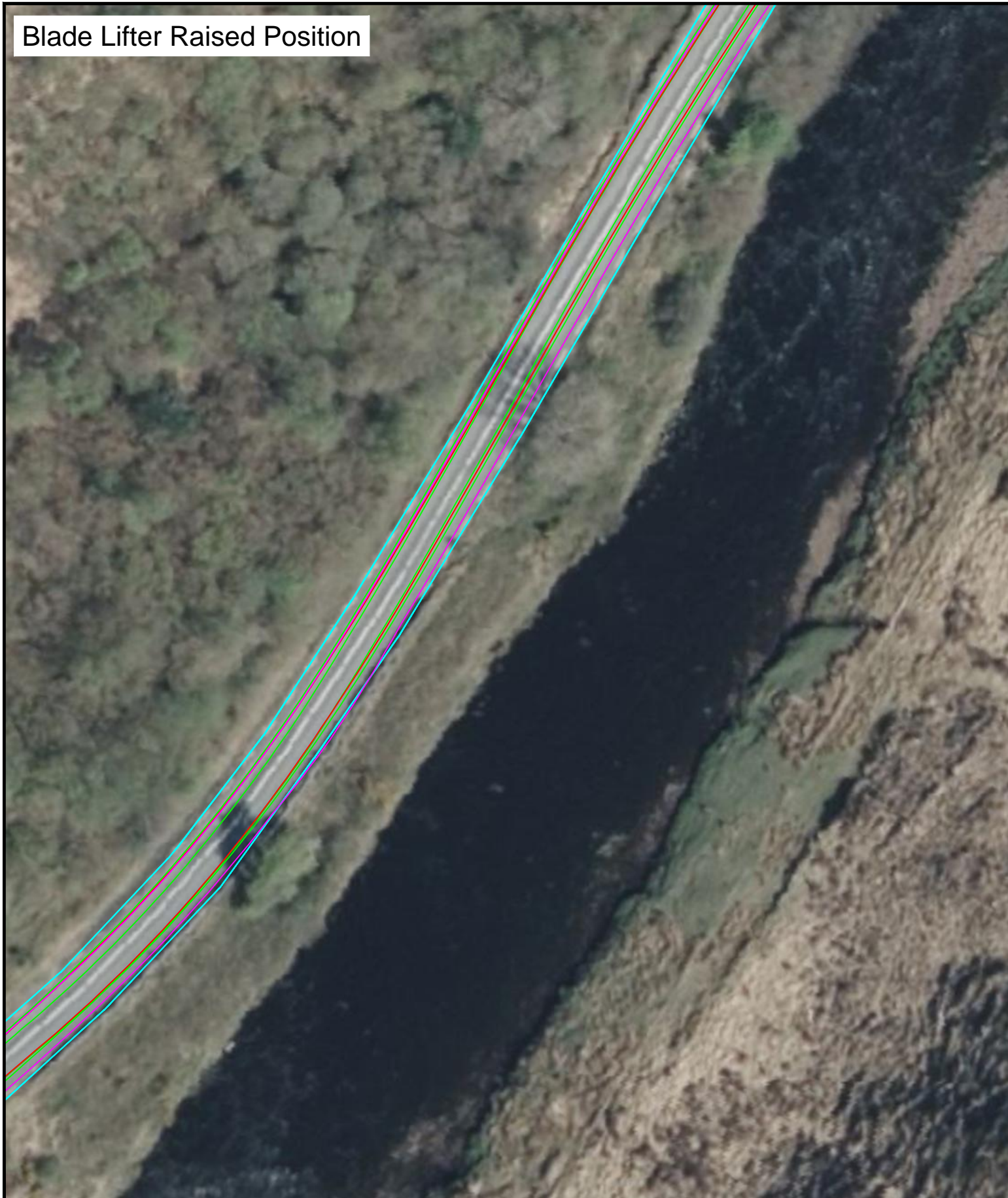
Notes

1. All mitigation is subject to confirmation through a test run.
2. This is not a construction drawing and is intended for illustration purposes only.
3. Do not scale from this drawing.

Rev	-			Drn	App	Date	-
Drawn	TJL	Approved	TL	Date	13/01/2026		
Status	Draft		Key				
Revision	00		Wheel SPA	Overrun			
Scale	1:1500 @ A3		Body SPA	Oversail			
Drawn No.	10110851 - PF - SPA - 25A						
			Load SPA	DoT			
			Indicative				

Blade Lifter Raised Position

Tower



Pell Frischmann

93 GEORGE STREET, EDINBURGH EH2 3ES
 Telephone +44 (0)131 240 1270
 Email: pfedinburgh@pellfrischmann.com
 www.pellfrischmann.com

Client **RWE**

Project **Muingmore Wind Farm**

POI **63** SPA Location **N59 Southwest of Largan**

Notes
 1. All mitigation is subject to confirmation through a test run.
 2. This is not a construction drawing and is intended for illustration purposes only.
 3. Do not scale from this drawing.

Drawing Title **N163 Blade Lifter and Tower**

Rev	-			Drn	-	App	-	Date	-
Drawn	TJL	Approved	TL	Date	13/01/2026				
Status	Draft		Key		—	Wheel SPA		Overrun	
Revision	00		—	Body SPA		Oversail			
Scale	1:500 @ A3		—	Load SPA		DoT			
Drawing No.	10110851 - PF - SPA - 26								

Mitigation



Trees to be trimmed.



Pell Frischmann

93 GEORGE STREET, EDINBURGH EH2 3ES
Telephone +44 (0)131 240 1270
Email: pfeinburgh@pellfrischmann.com
www.pellfrischmann.com

Client

RWE

Project

Muingmore Wind Farm

Drawing Title

N163 Blade Lifter and Tower

POI

63

SPA Location

N59 Southwest of Largan

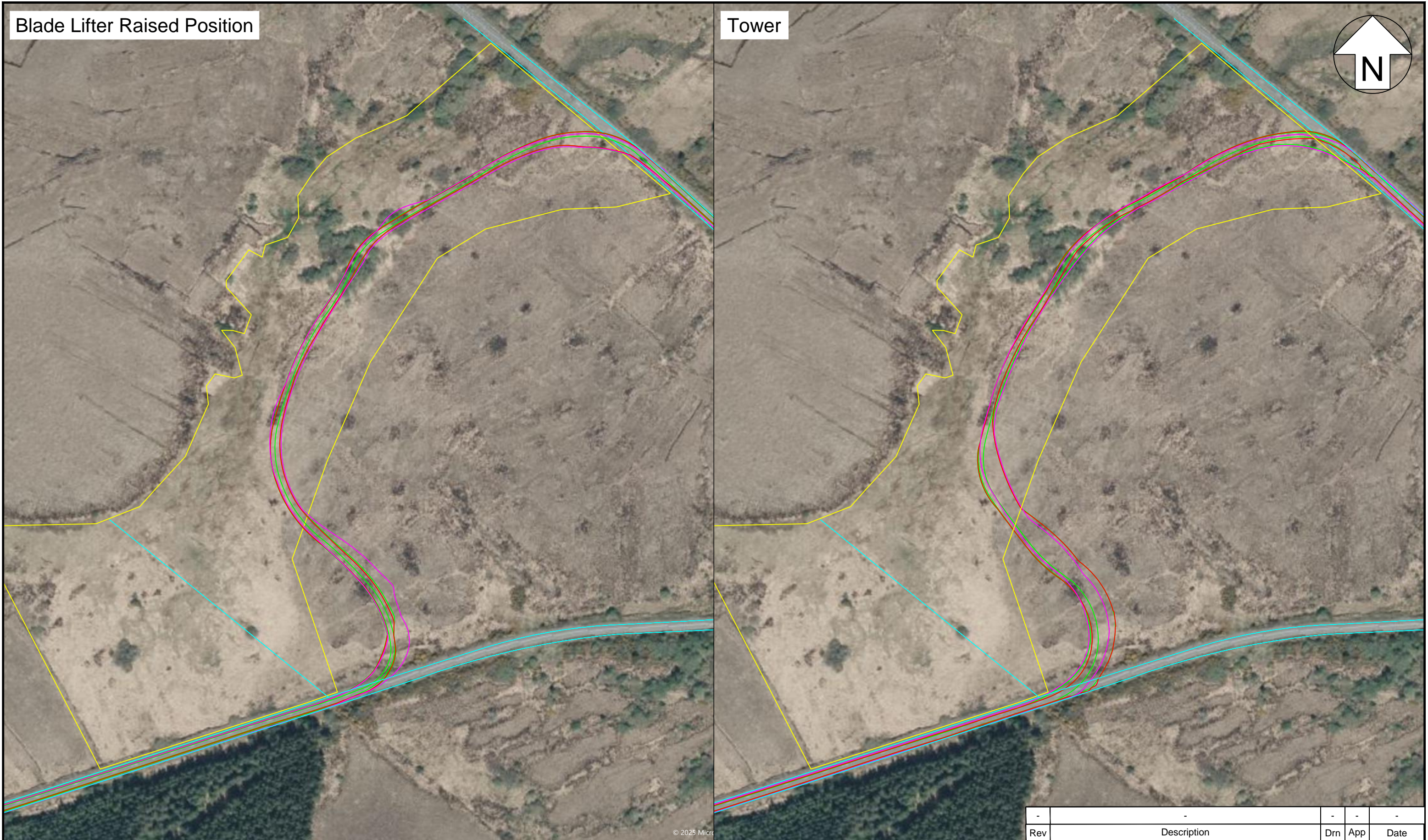
Notes

1. All mitigation is subject to confirmation through a test run.
2. This is not a construction drawing and is intended for illustration purposes only.
3. Do not scale from this drawing.

Rev	-			Drn	App	Date
Drawn	TJL	Approved	TL	Date	13/01/2026	
Status	Draft		Key		Overrun	
Revision	00		Wheel SPA	Overrun		
Scale	1:500 @ A3		Body SPA	Oversail		
Drawing No.			Load SPA	DoT		
			Indicative			
10110851 - PF - SPA - 26A						

Blade Lifter Raised Position

Tower



Pell Frischmann

93 GEORGE STREET, EDINBURGH EH2 3ES
 Telephone +44 (0)131 240 1270
 Email: pfedinburgh@pellfrischmann.com
 www.pellfrischmann.com

Client **RWE**

Project **Muingmore Wind Farm**

POI **64, 65** SPA Location **R313 Bangor Erris**

Notes
 1. All mitigation is subject to confirmation through a test run.
 2. This is not a construction drawing and is intended for illustration purposes only.
 3. Do not scale from this drawing.

Drawing Title **N163 Blade Lifter and Tower**

Rev	-			Drn	-	App	-	Date	-
Drawn	TJL	Approved	TL	Date	13/01/2026				
Status	Draft		Key		Wheel SPA (Red line) Body SPA (Green line) Load SPA (Magenta line) Indicative (Cyan line)				
Revision	00		Overrun (Diagonal hatching) Oversail (Yellow hatching)		DoT (Orange arrow)				
Scale	1:2000 @ A3								
Drawing No.	10110851 - PF - SPA - 27								

Mitigation



Load bearing surface to be laid. New bypass track and junction to be constructed to turbine manufacturer and road authority guidelines. Detailed design on a topographical survey base required. Fence and all other street furniture and obstacles to be removed. Vegetation to be cleared.



Pell Frischmann
 93 GEORGE STREET, EDINBURGH EH2 3ES
 Telephone +44 (0)131 240 1270
 Email: pfeinburgh@pellfrischmann.com
 www.pellfrischmann.com

Client: **RWE**

Project	Muingmore Wind Farm	Drawing Title	N163 Blade Lifter and Tower
POI	64, 65	SPA Location	R313 Bangor Erris
Notes	1. All mitigation is subject to confirmation through a test run. 2. This is not a construction drawing and is intended for illustration purposes only. 3. Do not scale from this drawing.		

Rev	-			Drn	App	Date
Drawn	TJL	Approved	TL	Date	13/01/2026	
Status	Draft		Key			
Revision	00		Wheel SPA	Overrun		
Scale	1:2000 @ A3		Body SPA	Oversail		
Drawing No.			Load SPA	DoT		
			Indicative			
10110851 - PF - SPA - 27A						

Blade Lifter Raised Position

Tower



Pell Frischmann

93 GEORGE STREET, EDINBURGH EH2 3ES
 Telephone +44 (0)131 240 1270
 Email: pfedinburgh@pellfrischmann.com
 www.pellfrischmann.com

Client **RWE**

Project **Muingmore Wind Farm**

POI **66** SPA Location **L1206 Goolamore**

Notes
 1. All mitigation is subject to confirmation through a test run.
 2. This is not a construction drawing and is intended for illustration purposes only.
 3. Do not scale from this drawing.

Drawing Title **N163 Blade Lifter and Tower**

Rev	-			Drn	App	Date	-
Drawn	TJL	Approved	TL	Date	13/01/2026		
Status	Draft		Key — Wheel SPA — Body SPA — Load SPA — Indicative Overrun Oversail DoT				
Revision	00						
Scale	1:500 @ A3						
Drawing No.		10110851 - PF - SPA - 28					

Mitigation



Pell Frischmann

93 GEORGE STREET, EDINBURGH EH2 3ES
 Telephone +44 (0)131 240 1270
 Email: pfeinburgh@pellfrischmann.com
 www.pellfrischmann.com

Client

RWE

Project	Muingmore Wind Farm	Drawing Title	N163 Blade Lifter and Tower
POI	66	SPA Location	L1206 Goolamore

Notes
 1. All mitigation is subject to confirmation through a test run.
 2. This is not a construction drawing and is intended for illustration purposes only.
 3. Do not scale from this drawing.

Rev	-	Description	-	Drn	-	App	-	Date	-
Drawn	TJL	Approved	TL	Date	13/01/2026				
Status	Draft	Key		<ul style="list-style-type: none"> — Wheel SPA — Body SPA — Load SPA — Indicative Overrun Oversail DoT 					
Revision	00								
Scale	1:500 @ A3								
Drawing No.	10110851 - PF - SPA - 28A								

Blade Lifter Raised Position

Tower



Pell Frischmann

93 GEORGE STREET, EDINBURGH EH2 3ES
 Telephone +44 (0)131 240 1270
 Email: pfeinburgh@pellfrischmann.com
 www.pellfrischmann.com

Client

RWE

Project

Muingmore Wind Farm

POI

67

SPA Location

L1206 West of Goolamore - Indicative Access Track

Notes

1. All mitigation is subject to confirmation through a test run.
2. This is not a construction drawing and is intended for illustration purposes only.
3. Do not scale from this drawing.

Drawing Title

N163 Blade Lifter and Tower

Rev	-			Drn	-	App	-	Date	-
Drawn	TJL	Approved	TL	Date	13/01/2026				
Status	Draft		Key		<div style="display: flex; justify-content: space-between;"> <div> <p>— Wheel SPA</p> <p>— Body SPA</p> <p>— Load SPA</p> <p>— Indicative</p> </div> <div> <p> Overrun</p> <p> Oversail</p> <p> DoT</p> </div> </div>				
Revision	00								
Scale	1:500 @ A3								
Drawing No.	10110851 - PF - SPA - 29								



Load bearing surface to be laid. New bypass track and access junction to be constructed to turbine manufacturer and road authority guidelines. Detailed design on a topographical survey base required. Fence to be removed. Vegetation to be cleared.



Pell Frischmann

93 GEORGE STREET, EDINBURGH EH2 3ES
 Telephone +44 (0)131 240 1270
 Email: pfeinburgh@pellfrischmann.com
 www.pellfrischmann.com

Client **RWE**

Project **Muingmore Wind Farm** Drawing Title **N163 Blade Lifter and Tower**

POI **67** SPA Location **L1206 West of Goolamore - Indicative Access Track**

Notes
 1. All mitigation is subject to confirmation through a test run.
 2. This is not a construction drawing and is intended for illustration purposes only.
 3. Do not scale from this drawing.

Rev	-			Drn	App	Date
Drawn	TJL	Approved	TL	Date	13/01/2026	
Status	Draft		Key			
Revision	00		Wheel SPA	Overrun		
Scale	1:500 @ A3		Body SPA	Oversail		
Drawing No.			Load SPA	DoT		
			Indicative			
10110851 - PF - SPA - 29A						

Blade Lifter Raised Position

Tower



Pell Frischmann

93 GEORGE STREET, EDINBURGH EH2 3ES
 Telephone +44 (0)131 240 1270
 Email: pfedinburgh@pellfrischmann.com
 www.pellfrischmann.com

Client **RWE**

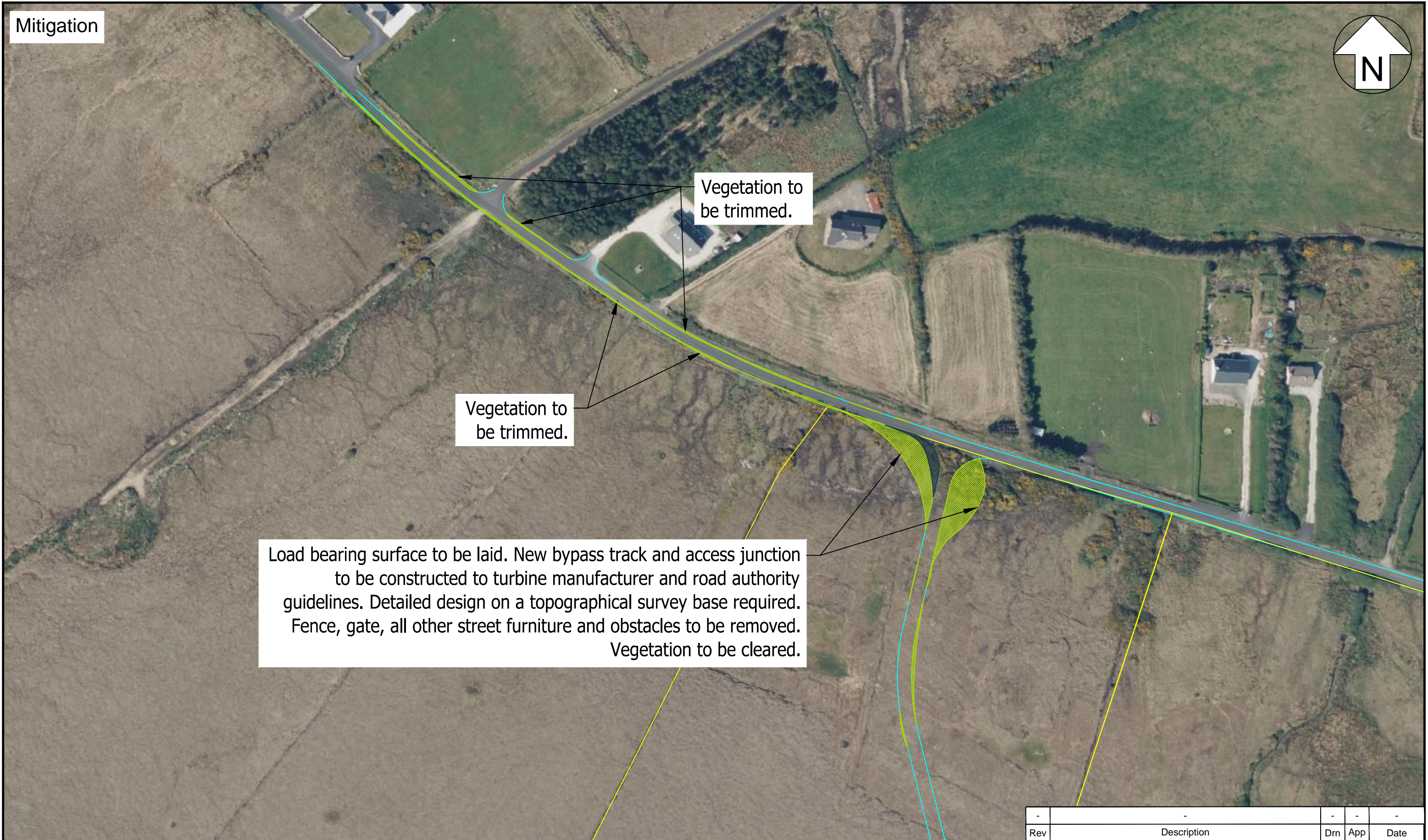
Project **Muingmore Wind Farm**

POI **68** SPA Location **L1206 West of Goolamore - Indicative Access Track**

Notes
 1. All mitigation is subject to confirmation through a test run.
 2. This is not a construction drawing and is intended for illustration purposes only.
 3. Do not scale from this drawing.

Drawing Title **N163 Blade Lifter and Tower**

Rev	-			Drn	-	App	-	Date	-
Drawn	TJL	Approved	TL	Date	13/01/2026				
Status	Draft		Key		— Wheel SPA Overrun — Body SPA Oversail — Load SPA DoT — Indicative				
Revision	00								
Scale	1:1500 @ A3								
Drawing No.	10110851 - PF - SPA - 30								



Vegetation to be trimmed.

Vegetation to be trimmed.

Load bearing surface to be laid. New bypass track and access junction to be constructed to turbine manufacturer and road authority guidelines. Detailed design on a topographical survey base required. Fence, gate, all other street furniture and obstacles to be removed. Vegetation to be cleared.

Pell Frischmann
 93 GEORGE STREET, EDINBURGH EH2 3ES
 Telephone +44 (0)131 240 1270
 Email: pfeinburgh@pellfrischmann.com
 www.pellfrischmann.com

Client: **RWE**

Project	Muingmore Wind Farm	Drawing Title	N163 Blade Lifter and Tower
POI	68	SPA Location	L1206 West of Goolamore - Indicative Access Track
Notes	1. All mitigation is subject to confirmation through a test run. 2. This is not a construction drawing and is intended for illustration purposes only. 3. Do not scale from this drawing.		

Rev	-	Description	-	Drn	-	App	-	Date	-
Drawn	TJL	Approved	TL	Date	13/01/2026				
Status	Draft		Key — Wheel SPA — Body SPA — Load SPA — Indicative [Hatched] Overrun [Diagonal Hatched] Oversail [Arrow] DoT						
Revision	00								
Scale	1:1500 @ A3								
Drawing No.	10110851 - PF - SPA - 30A								